

60 open



The carbon revolution

In 2010 Delta Powerboats challenged the status quo of the motor yacht industry and pioneered serial production of carbon fiber boats. Since then fifteen Delta 54 have been delivered to clients in the U.S, Europe and Asia and both Delta 54 and 88 have been appointed winners at the annual MBY Motor Boat of the Year awards.

Following this success, Delta 60 open is the newest addition to the Delta carbon series. A yacht based on the innovative thinking and technology

developed for its predecessors, but which is also further refined and even more technologically advanced. The light weight carbon hull is paired with twin Volvo Penta IPS 800s, a combination that makes her remarkably responsive and fuel efficient, capable of cruising at 30 knots with a range of 500 nautical miles and beyond without refueling.

The handmade interior is characterized by Scandinavian style simplicity, uncompromising quality and carefully selected high-end materials.

60 open

At a glance

- 60.2 ft
- 100% carbon fiber
- Twin Volvo Penta IPS 800
- 1,200 hp
- 13,500 kilos
- 39 knots
- Gyro stabilizer and DPS
- 3 double cabins



Deck and cockpit plan

- Hand laid teak deck
- Flush pop-up cleats, flush skylights and hatches
- Windlass bow
- Folding driver's and passengers' seats
- Customisable galley
- L-shaped sofas
- Oversized sunbed / sofa with fixed backrest
- Folding teak tables
- Hydraulic tender lift integrated with platform



Cockpit

- Galley with 4 top and 4 front functions
 - L-sofas and sunbed sofa in client's choice of fabric
- Folding teak tables with cup holders



Sunbed and platform

- Oversized sunbed with fixed backrest
- Hydraulic engine room hatch
- Hydraulic passerelle and hydraulic tender lift integrated with platform





Helm station

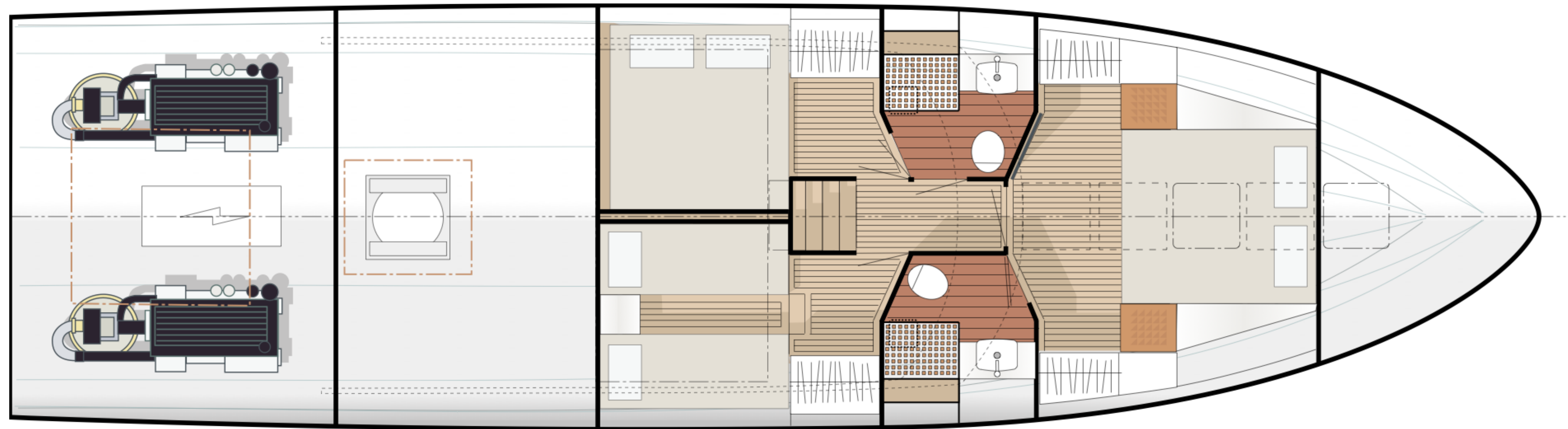
- Ros folding chairs in client's choice of fabric
- Volvo Penta / Garmin Glass Cockpit System
- Volvo Penta electronic controls, gyro and genset controls



General arrangement

Handmade interior with finest selected teak and eight layers of varnish.
Solid teak flooring, Irish wool carpets.

- Owner's stateroom with en-suite bathroom
- Two guest staterooms
- One guest's shared bathroom



Owner's stateroom

- Air condition outlet and control
- Removable chairs
- Sound system
- 220 V, 12 V, and USB outlets

Bathrooms

- Corian flooring in shower cabin
- Duravit by Philippe Starck basin
- Vola by Arne Jacobsen basin tap and shower handle

Guest staterooms

- Air condition outlet and control
- Twin bed (starboard)
- Double bed (port)
- Sound system
- 220 V, 12 V, and USB outlets



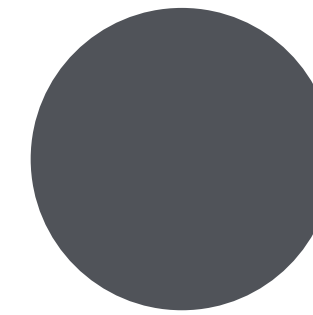


60 open

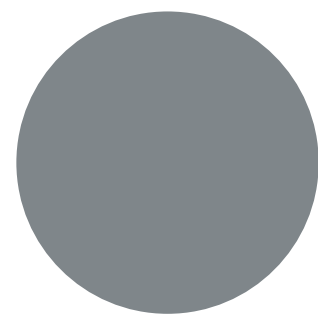
Gelcoat colours



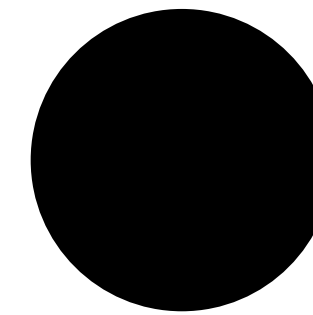
White + Black
NP10000



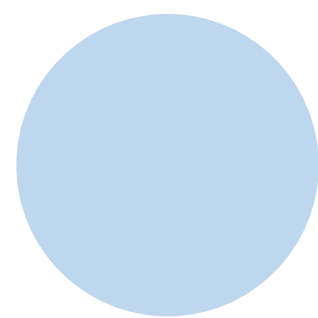
Dark grey + White
NP7015



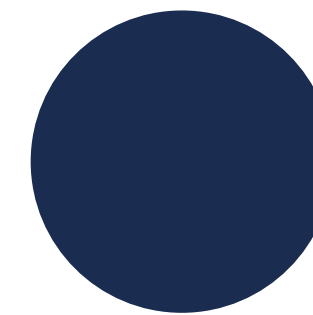
Grey + Black
NP7046



Black + White
NP28000



Light blue + Black
H016



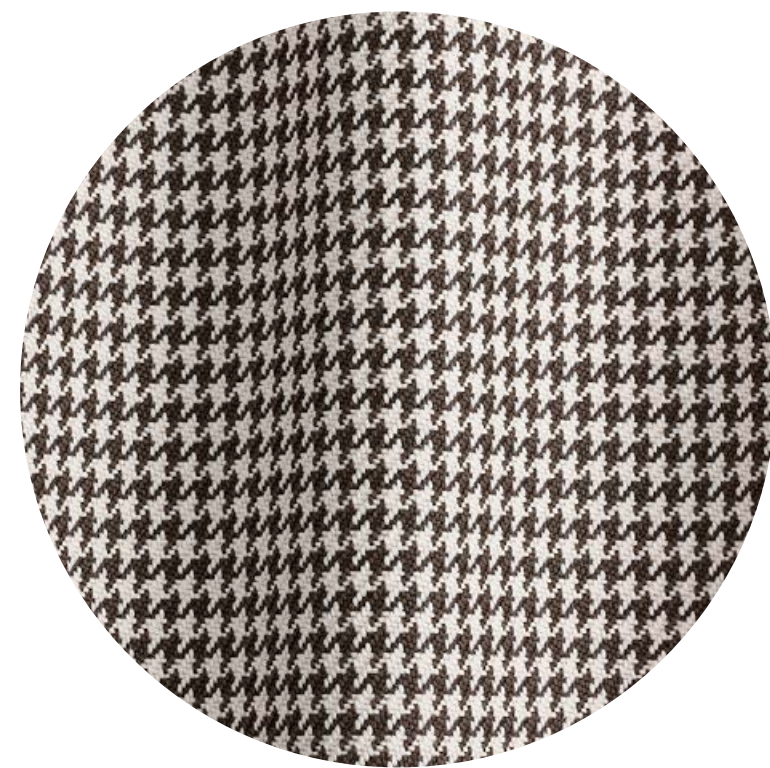
Dark blue + White
Būfa H549-0043

Upholstery fabrics

Dedar Milano / Pool



Beige
00.T14016_001



Ebano
00.T14016_002



Nero
00.T14016_003

Upholstery fabrics

Dedar Milano / Basquette



Ebano
00.T14013_002



Beige
00.T14013_003



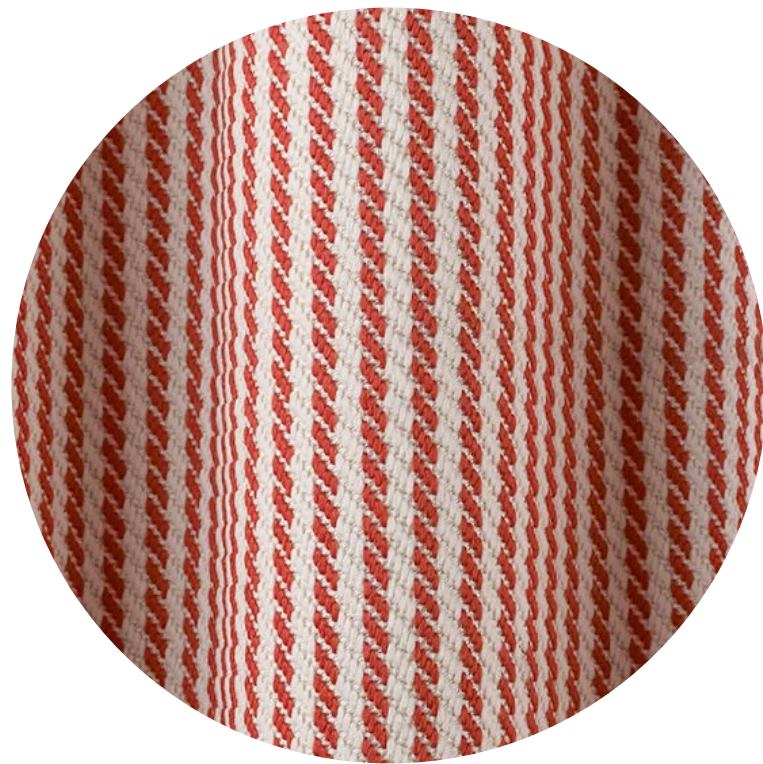
Corallo
00.T14013_006



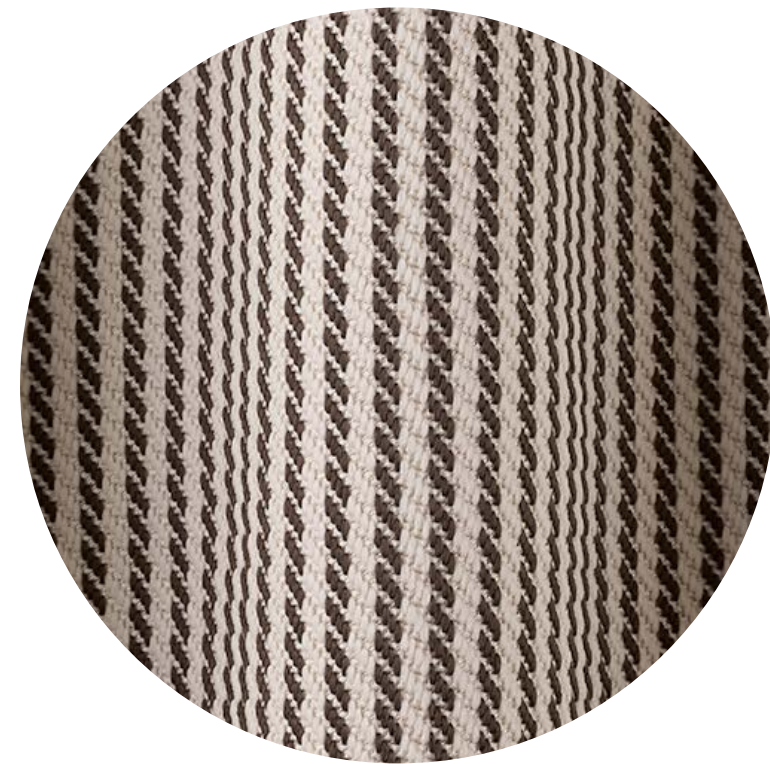
Turchese
00.T14013_007

Upholstery fabrics

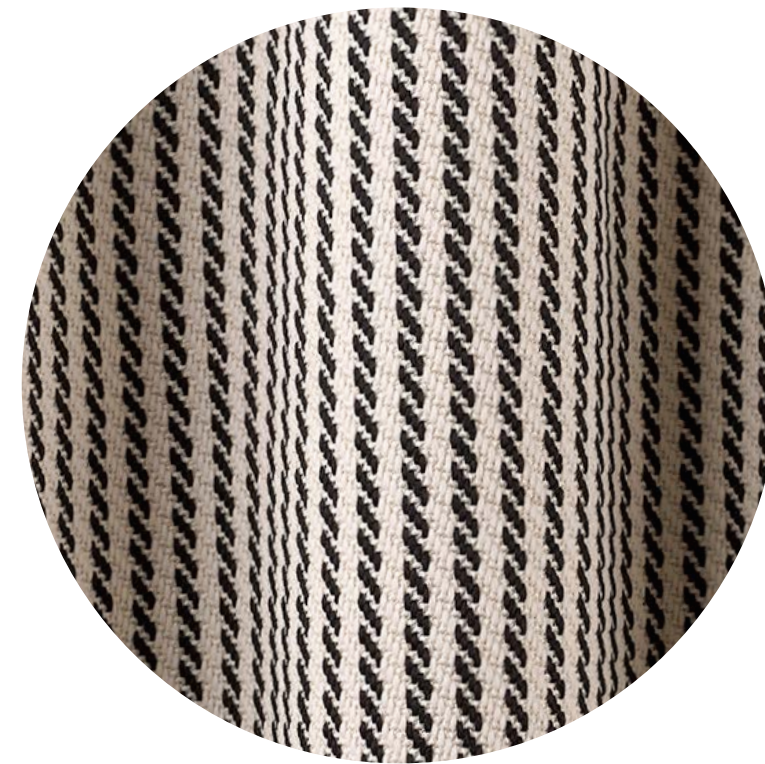
Dedar Milano / Summertime



Corallo
00.T14017_007



Ebano
00.T14017_002



Nero
00.T14017_003

Upholstery fabrics

Hermès outdoor / Pavage



Sable
HE.212014_M01



Atlantique
HE.212014_M04

Upholstery fabrics

Hermès outdoor / Perspective Cavaliere Bayadere



Sable
HE.212013_M01



Atlantique
HE.212013_M03

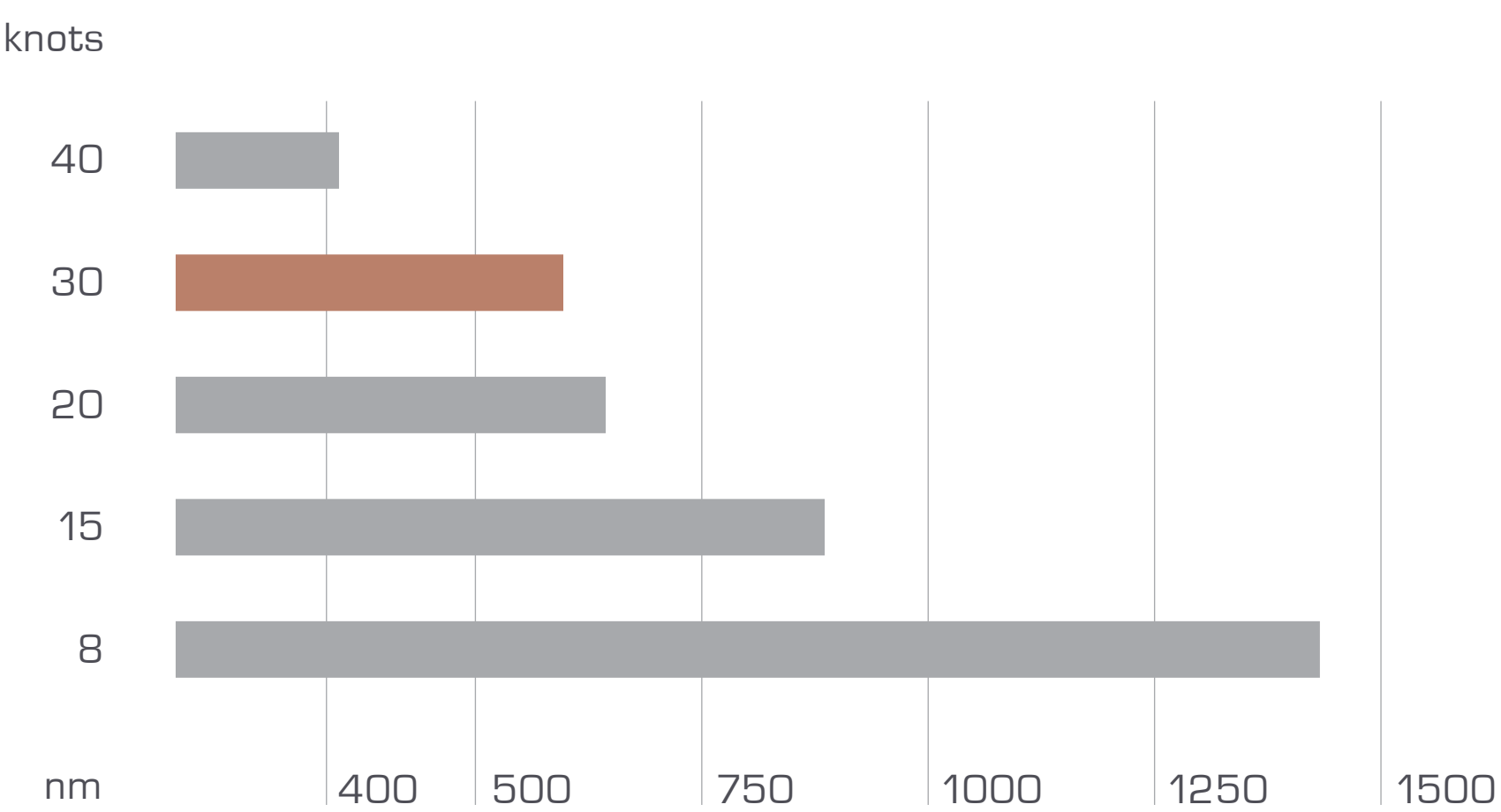


Performance

RPM / Consumption / Speed

rpm	litres/h	litres/nm	speed
1 000	16	2.0	8.4
1 300	36	3.5	10.3
1 600	66	3.2	13.2
1 900	88	4.7	19.5
2 100	105	4.6	22.9
2 300	128	4.9	26.8
2 500	150	5.0	30.0
2 600	175	5.5	32.0
3 050	248	6.5	39.2

Speed / Range



Performance test 2017.08.10.
2 x Volvo Penta IPS 800. Passengers: 3. Fuel tank: 60%. Water tank: 30%. Wind speed: 10 knots. Air temp: 22°. Water temp: 18°

Specification

LOA	18.22 m / 60.2 ft
Hull length	16.60 m / 54.5 ft
Beam	4.60 m / 15.1 ft
Draft	1.40 m / 4.6 ft
Height	6.20 m / 20.3 ft (antennas up) 4.20 m / 13.8 ft (antennas down)
Hull §material	Carbon fiber
Displacement	13,500 kilos (dry weight estimate)
Fuel capacity	2,900 litres
Fresh water	900 litres
Black water	270 litres
Grey water	270 litres
Cruising speed	16–33 knots (2 x VP IPS 800)
Top speed	38–39 knots (2 x VP IPS 800)
Safe range	500 nm
Engines	2 x Volvo Penta IPS 800
Engine power	1,200 hp
Electrical	Mastervolt/Luksusjaht
Generator	Fischer Panda 19 kW
Design	Lars Modin
Construction	Lightcraft/Diab/Luksusjaht
Manufacturer	Luksusjaht AS
CE classification	B

Construction

- Air-supported deep v-hull
- All lamination made according to Diab core infusion technology
- Hull and stringers in vacuum infusion laminated carbon fiber/vinylester/divinycell
- Bulk heads in vacuum infusion laminated carbon fiber/vinylester/divinycell
- Deck in vacuum infusion laminated carbon fiber/vinylester/divinycell
- T-top in vacuum infusion laminated carbon fiber/vinylester/divinycell

Manouvering and navigation systems

- 1 x Volvo Penta/Garmin Glass Cockpit System
- 1 x Volvo Penta autopilot
- 1 x Volvo Penta electronic steering
- 1 x Volvo Penta electronic helm
- 1 x Volvo Penta IPS joystick
- 1 x Volvo Penta trip computation software
- 2 x Garmin 22” HD multifunction touch displays
- 1 x Garmin GMR xHD2 open array radar
- 1 x Garmin depth sounder
- 1 x Garmin VHF
- 1 x Garmin AIS
- 1 x Garmin aft deck camera
- 1 x Garmin engine room camera
- 2 x Humphree Interceptors
- 1 x Humphree interface integrated with Glass Cockpit System
- 1 x Seakeeper M6000 gyro stabilizer
- 1 x LED nav lights set
- 2 x Windscreen wipers
- 1 x Jabsco search light
- 2 x Horns

Deck equipment and fittings

- 1 x Hand laid solid 10 mm teak deck
- 1 x Custom made stainless steel anchor roller integrated in bow
- 1 x Custom made stainless steel anchor
- 1 x Lewmar windlass with foot switch and remote control
- 1 x 60 m stainless steel anchor chain
- 2 x Custom made flag poles aft and bow
- 6 x Anodised aluminium pop-up mooring cleats
- 10 x Anodised aluminum fender locks
- 1 x Deck storage aft
- 1 x Deck storage midship
- 1 x Deck storage bow

- 1 x Lewmar flush skylight hatch owner’s cabin
- 1 x Lewmar flush skylight hatch anchor box
- 2 x Lewmar flush skylight hatches bathrooms
- 1 x Panoramic skylight owner’s cabin
- 1 x Acrylic glass sliding hatch companionway
- 2 x Stainless steel gates aft
- 1 x Hydraulic swim platform for tender launch
- 2 x Engine room vents
- 12 x Outside LED-lights
- 1 x Mooring pack incl. 10 x fenders, 6 x mooring lines, 1 x hook
- 1 x Cleaning set

Helm station

- 2 x Ros individually folding seats in client’s choice of fabric
- 1 x Delta alcantara-clad steering wheel
- 1 x Delta dashboard with 2 x integrated Garmin 22” HD touch displays
- 1 x Volvo Penta joystick control
- 1 x Volvo Penta electronic control throttle
- 1 x Fischer Panda genset control
- 1 x Seakeeper gyro stabilizer control
- 10 x 24 V backlit control switches
- 1 x Search light control
- 2 x USB accessories’ outlets
- 1 x 12 V outlet
- 1 x Handrail
- 2 x Cup holders
- 1 x Large storage drawer
- 1 x Helm station cover

Passenger’s side

- 2 x Ros individually folding seats in client’s choice of fabric
- 1 x Handrail
- 2 x Cup holders
- 2 x Stainless steel grab rail

- 1 x Storage for 8 x wine glasses, champagne glasses, water glasses and cups
- 1 x Cover

T-top

- 1 x Radar antenna
- 1 x VHF antenna
- 1 x Radio antenna
- 1 x AIS antenna
- 1 x GPS antenna
- 1 x Volvo Penta DPS antenna
- 2 x Empty domes for satellite phone and TV
- 2 x LED aft deck work lights
- 6 x LED dimmable lights
- 1 x Jabsco search light
- 1 x Optional covers to create saloon

Galley

Galley houses four top functions plus four front functions combined according to client’s needs.

Top

- 1 x Siemens 220 V cooktop
- 1 x Siemens barbecue
- 1 x Corian double sink
- 1 x Champagne sink
- 1 x Vola by Arne Jacobsen tap

Front

- 1 x Siemens 220 V combined oven/micro oven
- 1 x Siemens 220 V dish washer
- 1 x Isotherm stainless steel fridge with integrated freezer
- 1 x Frigo nautical winecooler
- 1 x Isotherm ice maker
- 1 x Storage with 4 drawers

Standard

- 1 x Corian countertop
- 1 x Stainless steel grab rail
- 1 x 220 V outlet
- 3 x LED spotlights
- 2 x Side storage for disposals
- 2 x Galley covers

Cockpit seating and sunbed

- 2 x L-shaped sofas with fabric of client’s choice
- 2 x Teak tables folding
- 1 x Starboard drawer storage
- 1 x Port drawer storage incl. tableware for 8 persons
- 1 x Large storage underneath each sofa
- 6 x Seasmart carbon fiber awning posts
- 1 x Oversized sunbed with fabric of client’s choice
- 1 x Fixed backrest on stainless steel supports
- 3 x Storage lockers
- 2 x Sofa covers
- 1 x Sunbed cover

Platform

- 1 x HB Technics hydraulic tender lift for up to 400 kilos
- 1 x Opacmare Passerelle gangway/swim ladder integrated with platform
- 1 x Emergency swim ladder
- 1 x Hand laid vacuum glued teak deck

Owner’s stateroom

Handmade interior with finest selected teak and eight layers of varnish. Removable panels covered in Italian fabrics. Solid teak flooring, Irish wool carpets.

- 1 x 20 cm mattress
- 1 x 7 cm mattress top

- 2 x Stainless steel grab rails around wardrobes
- 2 x 12 V outlets
- 2 x USB accessories’ outlets
- 2 x 220 V outlets
- 1 x Fusion stereo incl. 2 hidden speakers
- 1 x Air conditon control
- 1 x Air condition outlet
- 10 x LED ceiling spotlights
- 2 x LED reading lights
- 4 x Concealed lights
- 2 x Removable chairs
- 4 x Storage
- 2 x Wardrobes
- 1 x Oceanair curtain roof
- 2 x Oceanair curtains side windows

Guest’s staterooms

Port cabin with two single beds, starboard cabin with one double bed. Handmade interior with finest selected teak and eight layers of varnish. Removable panels covered in Italian fabrics. Solid teak flooring, Irish wool carpets.

- 1 x 20 cm mattress
- 1 x 7 cm mattress top
- 1 x Air conditon control
- 1 x Air condition outlet
- 4 x Pillows
- 1 x 12 V outlet
- 1 x Stereo with 2 hidden speakers
- 1 x USB outlet
- 1 x 220 V outlets
- 3 x LED spotlights
- 2 x LED reading lights
- 2 x Concealed LED-lights
- 2 x Wardrobes, 4 x storage in various sizes
- 1 x Stainless steel porthole
- 1 x Oceanair curtain

Bathrooms

The interior comprises one owner’s en-suite bathroom plus one guest’s shared bathroom.

- 1 x Corian flooring in shower cabin
- 1 x Duravit by Philippe Starck basin
- 1 x Vola by Arne Jacobsen basin tap
- 1 x Vola by Arne Jacobsen shower head
- 1 x Vola by Arne Jacobsen toilet paper holder
- 2 x Vola towel hooks
- 1 x 220 V towel dryer
- 1 x Stainless steel holding tank with 2-way valve for ocean or deck drainage
- 1 x Jabsco 24 V shower drainage with 2-way valve for ocean or deck drainage
- 1 x Jabsco 24 V electrical toilet with macerator
- 1 x 220 V outlet
- 3 x LED spotlights
- 1 x Mirror
- 2 x Mirror lockers
- 2 x Teak cabinets

Electrical

Electrical system by Mastervolt with Czone 24 V distribution and digital switching including custom mobile app interface controlling lights, tanks, pumps, batteries, shore power.

- 4 x Mastervolt 90 Ah AGM starting batteries
- 2 x Mastervolt 180 Ah Li-ion service batteries
- 1 x Mastervolt automatic shore power/genset 230 V distribution switch
- 3 x Mastervolt Combi inverters/chargers 100/2000 W
- 4 x Mastervolt galvanic isolators 3.5 kW
- 1 x Czone 24 V management integrated with Garmin interface
- 1 x Czone tank management for fuel, black water, grey water incl. hi /low alarm
- 1 x Czone bilge management with alarm and automatic 5-zone pump control
- 1 x Apple iPad with Czone app interface

- 1 x Fischer Panda 19 kW genset
- 1 x 220 V breaker system
- 2 x 50 A shore power cables with 50 A pigtail adapter (options for A/C)

Air and water management

- 1 x Water heater 80 litres with heat exchange from engine or 220 V heater
- 1 x Webasto BlueCool air condition 55,000 BTU
- 1 x Jabsco automatic water pump with pressure tank
- 5 x Jabsco 24 V bilge pumps with auto function and manual override
- 5 x Bilge alarms
- 1 x Flying bilge pump
- 1 x Vetus black water pump
- 1 x Vetus grey water pump
- 1 x Central vacuum cleaner

Engine room

- 1 x Hydraulic hatch lift
- 1 x Engine room light
- 1 x Automatic fire extinguishing system
- 3 x Fixed diesel filters
- 1 x 220 V outlet
- 1 x 12 V outlet

Also included

- Choice of black or polished steel finish on outside stainless steel details
- Choice of black or white caulking for teak deck
- Covers for T-top
- Delivery to the Mediterranean
- Free choice of colours for awning posts and canvas covers
- Free choice of gelcoat hull color, white/black/blue/light blue/grey/dark grey*
- Free choice of gelcoat water lines colour
- Free choice of upholstery fabrics from Dedar, Hermès Outdoor or Sunbrella
- Pre-installed digital charts for Mediterranean, Caribbean and Scandinavian waters
- Spare parts kit engines
- Spare parts kit generator
- Spare parts kit Seakeeper (impeller and zinks)
- Sunpad foredeck 2x2 m incl. fasteners
- Training in Mediterranean
- Training in Stockholm
- Upgraded Fusion sound system 4-zones hi-fi
- Zodiac 3-3,5 m tender with 20 hp outboard engine

*Deck and top always white

Please note: preliminary specification subject to change.



Delta carbon series



54



60



88

Delta Powerboats was founded in 2002 in Stockholm, Sweden. Since our start we have delivered 600 boats between 25 and 88 ft to clients all over the world.

In 2010 Delta Powerboats was the first manufacturer in the motor yacht industry with large scale production of carbon fiber boats. Today the carbon series includes Delta 54, 60 and 88.



P O W E R B O A T S